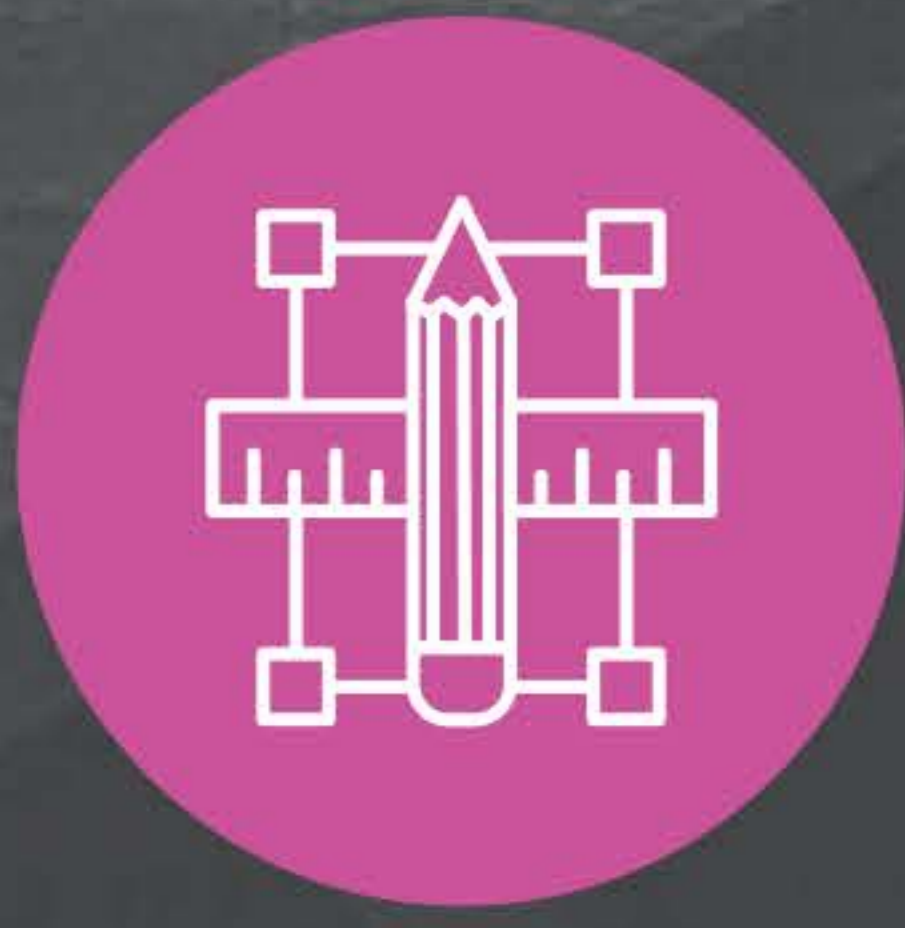




# DELIVER

## Deakin Teaching Capability Framework



### PSF Areas of Activity

<b>A1</b> <b>LEARNING DESIGN</b>	<b>A2</b> <b>TEACH AND SUPPORT LEARNING</b>	<b>A3</b> <b>ASSESSMENT AND FEEDBACK</b>
<p>Design and develop course and unit curriculum, materials and activities that are engaging, inclusive and accessible, in collaboration with teaching teams.</p> <p>Develop and ensure constructively aligned learning outcomes, volume of learning and assessment of learning at the course and unit level.</p> <p>Introduce innovative curriculum, learning materials and activities.</p>	<p>Collaborate effectively with teaching teams to incorporate a range of strategies for teaching in a range of contexts.</p> <p>Deliver learning activities which instil enthusiasm for the discipline amongst learners, encourage inclusive, respectful participation of learners, and create a culture of inquiry and collaboration which enhances learners' autonomy.</p> <p>Introduce innovation to teaching practice.</p>	<p>Design and utilise a variety of authentic, accessible and inclusive assessment tasks and rubrics, which encourage academic integrity in collaboration with teaching teams.</p> <p>Design and deliver purposefully designed feedback opportunities and practices which support learners to develop evaluative judgement.</p> <p>Take part in assessment panels and moderate between markers within the unit.</p> <p>Introduce innovation to assessment feedback and practice.</p>
<b>A4.1</b> <b>LEARNING ENVIRONMENTS</b>	<b>A4.2</b> <b>STUDENT SUPPORT AND GUIDANCE</b>	<b>A5</b> <b>PD, RESEARCH AND SCHOLARSHIP</b>
<p>Provide learning environments which are accessible and inclusive, and adapt materials for diverse learners.</p> <p>Create opportunities in the learning environment to develop a culture of respectful, inclusive collaboration among learners, teachers and communities.</p> <p>Introduce innovation to learning environments.</p>	<p>Design and deliver learning activities that scaffold learning to build towards achievement of graduate learning outcomes.</p> <p>Provide academic counselling and mentoring to students, including referring students to university services.</p> <p>Incorporate academic and other student support within learning materials.</p>	<p>Engage with and contribute to research in learning and teaching to inform teaching practice.</p> <p>Evaluate practice and innovations through evidence and evaluation frameworks.</p> <p>Contribute to professional bodies and communities of practice in teaching practice.</p> <p>Engage in relevant capability building activities. Reflect and develop own teaching philosophy.</p>



### PSF Core Knowledge

<b>K1</b> <b>DISCIPLINE KNOWLEDGE</b>	<b>K2</b> <b>TEACHING PRACTICE</b>	<b>K3</b> <b>HOW STUDENT LEARN</b>
<p>Relevant and current discipline knowledge including applications of unit content.</p> <p>Threshold concepts in the discipline.</p> <p>How concepts in the unit relate to other units in the course.</p>	<p>Current teaching practices in the discipline.</p> <p>Different approaches to explaining concepts to facilitate a diverse range of students to learn equitably, and to adapt materials where necessary for diverse learners with specific additional needs.</p> <p>Ways to ensure the unit is designed to scale so that models can be equally effective with large or small numbers of learners.</p>	<p>Contemporary learning theory.</p> <p>The implication of learners' discipline backgrounds on the unit or course design.</p> <p>Development of support material to ensure all staff contributing to teaching are aware and supported to deliver the teaching philosophy.</p> <p>Development of a safe and respectful learning environment, including modelling and setting codes for respectful interactions, using inclusive language, managing sensitive content and conflict/disagreement effectively.</p> <p>Ways to sequence the curriculum to support development and evidence of learning outcomes.</p>
<b>K4</b> <b>LEARNING TECHNOLOGIES</b>	<b>K5</b> <b>EVALUATING YOUR TEACHING</b>	<b>K6</b> <b>QUALITY ASSURANCE AND ENHANCEMENT</b>
<p>Ways to implement innovative, accessible and inclusive educational technologies in units and courses.</p> <p>Minimum standards and best practice in design and development of online resources.</p> <p>Use of learning technologies that facilitate collaboration between learners.</p> <p>Electronic assessment and marking approaches.</p>	<p>Ways to collect and analyse evidence and analytics about teaching and learning in a unit or course across time.</p> <p>Ways to use evidence to implement changes to design and delivery.</p>	<p>Deakin and Faculty teaching and learning policies, procedures and minimum standards.</p> <p>Ways to review and monitor student feedback at the course and unit level including unit review processes.</p> <p>The practice and importance of evidence-based teaching practice for teaching teams.</p>



### PSF Professional Values

<b>V1</b> <b>RESPECT DIVERSE LEARNERS</b>	<b>V2</b> <b>PROMOTE PARTICIPATION &amp; EQUALITY</b>	<b>V3</b> <b>USE EVIDENCE-INFORMED APPROACHES</b>	<b>V4</b> <b>ACKNOWLEDGE THE WIDER CONTEXT</b>
<p>Develop inclusive and accessible learning environments, activities, resources and assessments.</p> <p>Demonstrate and promote indigenous and other cultural competence and awareness in teaching and in student interactions.</p> <p>Provide appropriate scaffolding to support a range of student interactions.</p> <p>Identify and nurture high achieving learners.</p>	<p>Provide a variety and choice of learning activities, resources and assessments to support success of all learners.</p> <p>Provide links to resources within the unit to enable learners to actively seek appropriate support.</p> <p>Direct students to appropriate support services and resources for their needs.</p> <p>Be aware of factors that impact on student progress, retention and success; monitor and act on student progress, retention and success.</p> <p>Negotiate support or alternative pathways for students at risk or who have previously failed the unit.</p>	<p>Engage in reflective practice for teaching.</p> <p>Contribute to scholarship of learning and teaching through sharing of practice, developing evidence-based approaches, research into dissemination and/or application of research.</p> <p>Seek opportunities for relevant capability building activities.</p>	<p>Implement university, faculty and discipline priorities into teaching practice.</p> <p>Be aware of trends and issues around the student learning experience, student support and professional practice within the wider Higher Education (HE) context.</p> <p>Be aware of the changing nature of student demographics and implications for teaching practice.</p>



Deakin University

[dteach.deakin.edu.au/deakin-teaching-capability-framework](https://dteach.deakin.edu.au/deakin-teaching-capability-framework)

KEEP UP TO DATE BY SIGNING UP TO THE NEWSLETTER ON DTEACH OR EMAIL:

[learningfutures@deakin.edu.au](mailto:learningfutures@deakin.edu.au)